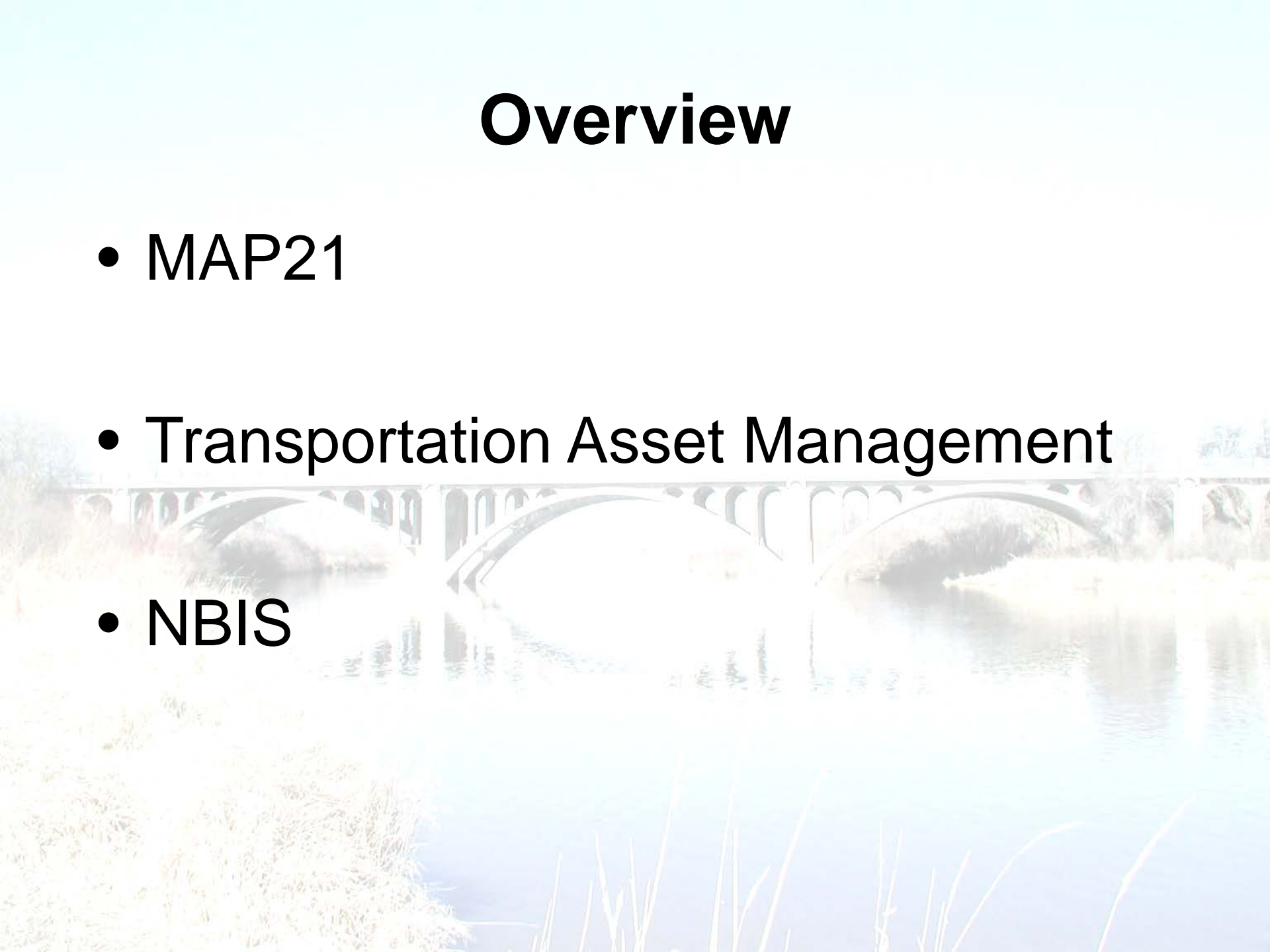


FHWA Update

**Southeast Bridge Preservation Partnership
April 14, 2015**

Overview

- MAP21
- Transportation Asset Management
- NBIS

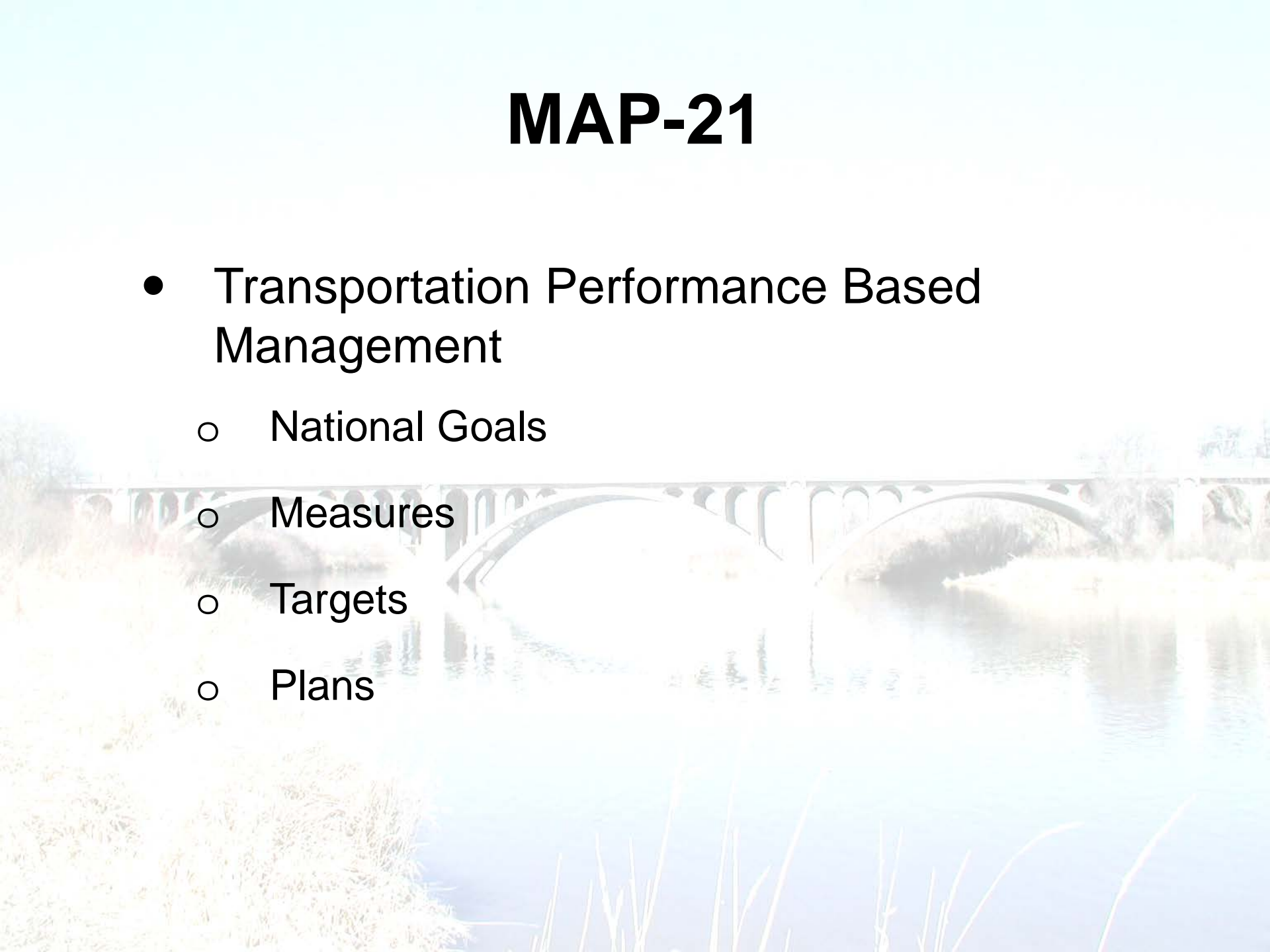


MAP-21

- Transportation Performance Based Management
 - Performance Measures Rulemaking
 - Asset Management Rulemaking
 - <https://www.federalregister.gov/agencies/federal-highway-administration>

MAP-21

- Transportation Performance Based Management
 - National Goals
 - Measures
 - Targets
 - Plans



MAP-21

- **National Goal**

Maintain the Highway Infrastructure Asset System in a state of good repair

A stone arch bridge spans a river, with reeds in the foreground. The bridge has multiple arches and is reflected in the water. The scene is captured in a slightly desaturated, naturalistic style.

MAP-21

Performance Measures

For purposes of carrying out National Highway Performance Program USDOT will establish measures:

- Condition of Pavements
- Condition of Bridges



MAP-21

Special Performance Rules

National Highway Performance Program

- No greater than 10% of total deck area of bridges on the NHS are located on bridges classified as structurally deficient for 3 consecutive years

Transportation Asset Management

- Process of maintaining, upgrading and operating assets cost-effectively
- Engineering and Economic principals
- Planning tool



Goals and Policies



Inventory/Inspection Data



Trends



Resources



Alternative Evaluation

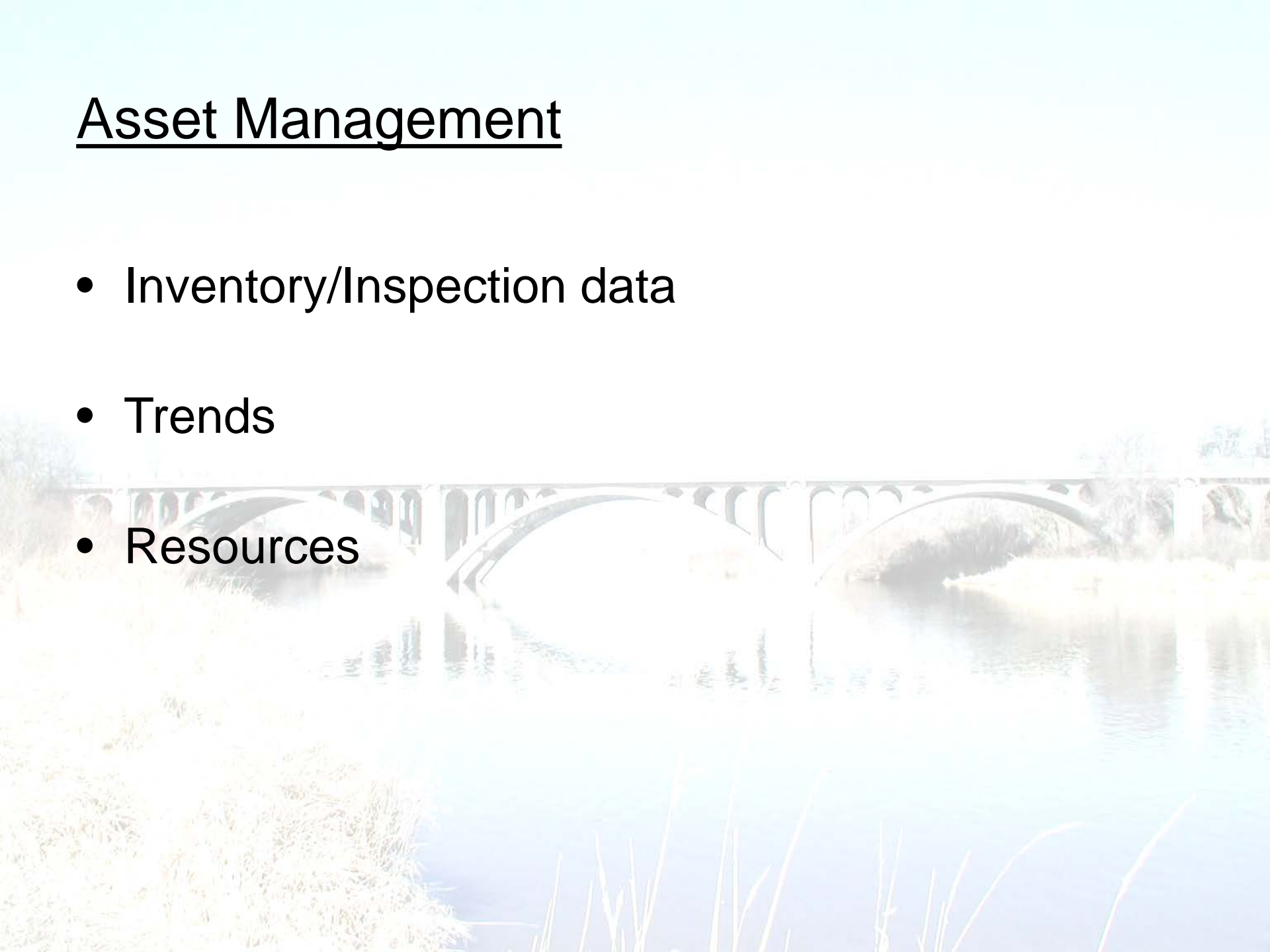


Performance Measures



Asset Management

- Inventory/Inspection data
- Trends
- Resources



Inspection and Inventory

- Element Level Inspections
- Updates to NBIS
- NTIS



Element Level Bridge Inspections

- Implementation on NHS
- October 2014

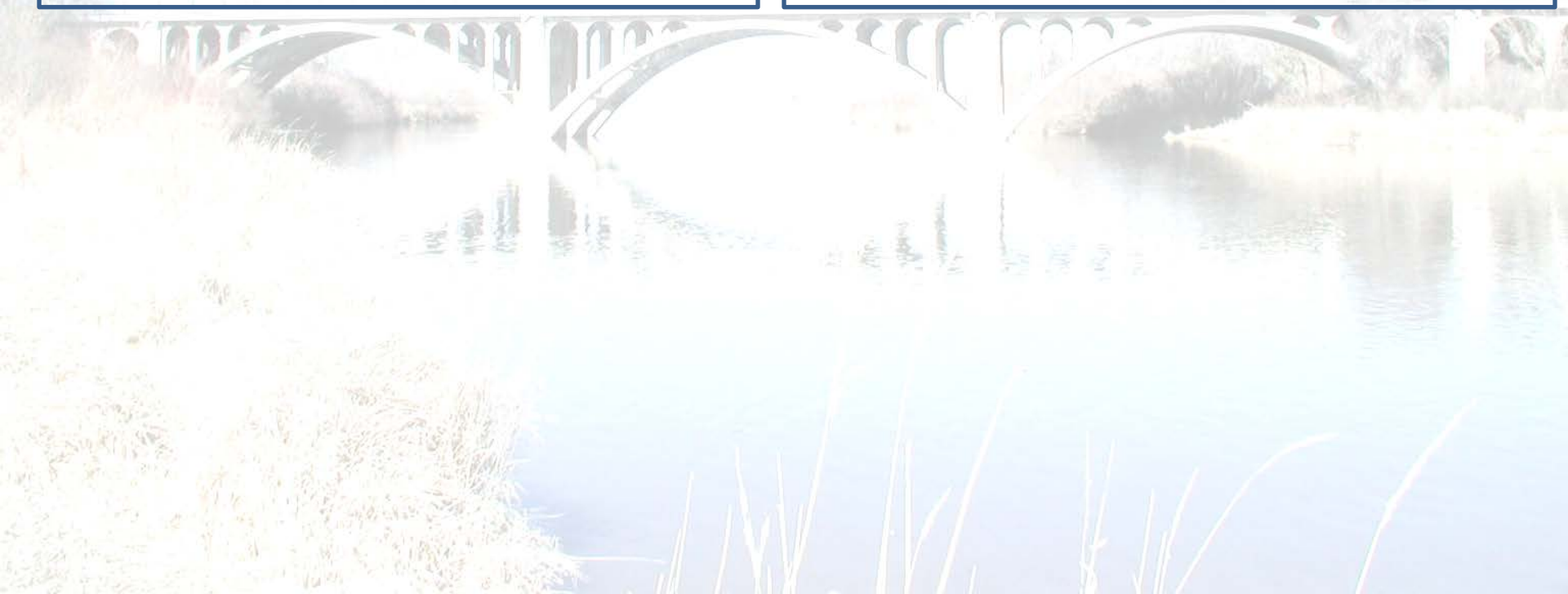


Component

- General Condition Rating – 0 -9
- Deck, Super, Sub

Element Level

- Detailed Condition Description
- Condition States
- Quantify Amount



Element Level Bridge Inspections

- Condition State(CS)
 - CS 1 – good
 - CS 2 – fair
 - CS 3 – poor
 - CS 4 – severe – load capacity implications



NBIS

- Rule making – late summer
- Inventory
- NHI course update



NTIS

- Final rule
- Inventory guide
- TOMIE
- FHWA oversight
- NHI training



Reliability Based Inspections

- 24 month cycle
- Maintenance and Preservation



Questions

